

# 2009 MANSW ANNUAL CONFERENCE



Star quality teaching and learning - in our hands.

18 – 20 SEPTEMBER 2009

Novotel  
Brighton Beach

Get your registration in, plan to be a presenter

Organise your funding early – there is a registration included in this brochure.

Organise your accommodation directly with the Novotel.

Share your expertise and good ideas with your colleagues - be a conference presenter! **Application form is also available on the website.**

[www.mansw.nsw.edu.au](http://www.mansw.nsw.edu.au)

# MANSW Conference 2009

The broad conference program will provide stimulating teaching ideas for all teachers of mathematics, be they early childhood, primary, secondary or post-secondary. There will be workshops on teaching strategies K-12+, reports on the latest educational research and the opportunity to improve technological knowledge and skills while evaluating the impact of technology on the teaching of mathematics. Our conference will include a combination of keynote addresses, presentations and workshop sessions with 9 different workshops / presentations in each session. The draft program is attached.

A display of educational publishers and distributors will provide insight into the latest reference material and teaching support available. The discussions and networking with other teachers are also extremely valuable and it's fun catching up with friends..

## Accommodation

You need to organise your own accommodation as it is not part of the registration for the conference..

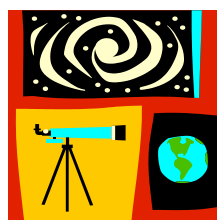
For those who wish to stay at the Novotel, Brighton Beach there is a special offer. To make an accommodation booking phone the **Novotel, Brighton Beach** on 9556 5111 and tell them you will be a delegate at the MANSW Conference.

Wherever you decide to stay - book early to avoid disappointment!

## Saturday 19 September: Conference Dinner

The conference dinner will be held on Saturday evening in the Ballroom at the Novotel, Brighton Beach. Make your booking to attend this dinner on the registration form.

The dinner will have a ☆ Star Struck ☆ theme - so make sure you are ready have your dancing shoes on.



## Registration

Registrations from MANSW members receive a \$150 discount for a full 3 day **Registration package** compared to the rate for non-members. If you are not currently a personal member of MANSW and wish to join before registering for this conference, please download the 2009 Membership form from our website [www.mansw.nsw.edu.au](http://www.mansw.nsw.edu.au) and send it in together with your payment and registration form.

**Please register early.** Remember, three day registrations also receive an additional discount. Registrations will only be processed when payment is received

Registrations will close Friday 21 August 2009

**OR EARLIER IF THE CONFERENCE IS FULLY SUBSCRIBED BEFORE THAT DATE.**

## Call for presenters

We encourage all conference participants to consider giving a presentation. We want to recognise, celebrate and share achievements in the classroom. It may involve practical classroom ideas, assessment, investigations, problem solving, working mathematically, research, technology or any other ideas related to Mathematics education K-12+.

There are so many good ideas and strategies being used in classrooms all around the state and we'd love to see you share yours with your colleagues. If you know somebody who should present a workshop, please encourage them to put in an application! An overwhelming majority of our conference evaluation forms say how much MANSW members value hearing about other teacher's great ideas that work in the classroom.

There is a form for potential presenters included with this brochure. Please help our planning by registering your interest in running a workshop as early as possible. If you're not sure about your proposal for a workshop, don't put it off - ring the MANSW office now and discuss it with our Professional Officer, Margaret Bigelow. Please think seriously about giving it a go!

*We hope to see you there!*  
**Novotel, Brighton Beach**  
**Brighton-le-Sands**